



ELLENDALE PUBLIC SCHOOL

Return to In-Person Instruction & Continuity of Services Plan

Ellendale Public School

Board Approved: August 10, 2020

Updated: October 8, 2020, December 14, 2020, April 12, 2021, & June 14, 2021

Dear EPS Families,

The purpose of this document is to outline Ellendale Public Schools' Return to In-Person Instruction and Continuity of Services Plan with the utilization of the American Rescue Plan Act of 2021 Elementary and Secondary School Emergency Relief Fund (ARP ESSER) support allocated for Ellendale Public Schools. Per the ARP ESSER requirements, an LEA that receives ARP ESSER funds must, within 30 days of receiving the funds, make publicly available on its website a plan for the safe return to in-person instruction and continuity of services. Before making the plan publicly available, the LEA must seek public comment on the plan.

Per the guidance and requirements from the State of North Dakota, as communicated by Governor Burgum and State Superintendent Baesler on July 14, 2020, all North Dakota school districts were required to include a health and safety plan and a distance learning plan. These plans required approval by the local School Board prior to the beginning of classes with students. The Ellendale Public School Board approved the 2020-2021 EPS Health and Safety Plan at their regular meeting on August 10, 2020. The EPS Health and Safety Plan was built utilizing recommendations and guidelines from county, state, and national health organizations, public education agencies, and government officials. Further input and feedback were gathered from Ellendale Public School staff, parents, and students through surveys, committee meetings, and virtual presentations.

Ellendale Public School safely returned students to in-person instruction in August 2020 and remained in-person for the duration of the 2020-2021 school year. As the pandemic evolved, so did our response, as the EPS Board updated the plan on October 8, 2020, December 14, 2020, and April 12, 2021. Based on successful implementation of mitigation strategies in Ellendale Public School and the increase of vaccinations in our community, the threat of COVID-19 has drastically reduced. As such, EPS will end many of the mitigation strategies utilized during the first year of the pandemic. If circumstances arise that lead to recommendations for mitigation strategies in the future, administration will notify the Board of Education at that time and seek approval, as necessary. This does not mean the district will completely return to a pre COVID-19 normal or that all mitigation strategies will halt. It means that the district may not continue some of the additional mitigation strategies that were specific to COVID-19 and significantly impacted Ellendale Public School operations or experiences.

Moving forward, Ellendale Public School District will continue to seek input on our pandemic response and the utilization of ESSER funds. We will continue to adjust to our Return to In-Person Instruction and Continuity of Services Plan and implement it accordingly to address the learning needs of our students.

Sincerely,

Michael J. Kaiser
Superintendent

Assumptions & Assurances

Ellendale Public School Believes

- Every student should have the opportunity to engage in learning, regardless of the spread of COVID-19 in our community.
- Schools have a vital role in providing safe environments for students, focusing on both social-emotional and physical health.
- By working together with educators, staff, health care professionals, parents, students, and community members we can solve most challenges.
- Our district will make decisions based on the most current guidance from local, state, and national health care officials.
- Our School Board will ensure our plan meets the needs of our students, educators, staff and community.

Our Planning Team

The EPS COVID-19 Response Team consisting of the following members:

- Michele Thorpe
- Michael Kaiser
- Matt Herman
- Dan Girard
- Cindy Rall
- Lana Norton
- Allison Radermacher
- Dennis Ketterling
- Norma Trautmann
- Lorraine Betting
- Deanne Olson
- Ashli Rall
- Randall Brockman
- Amber Miller
- Angela Goehring
- Abby Peterson

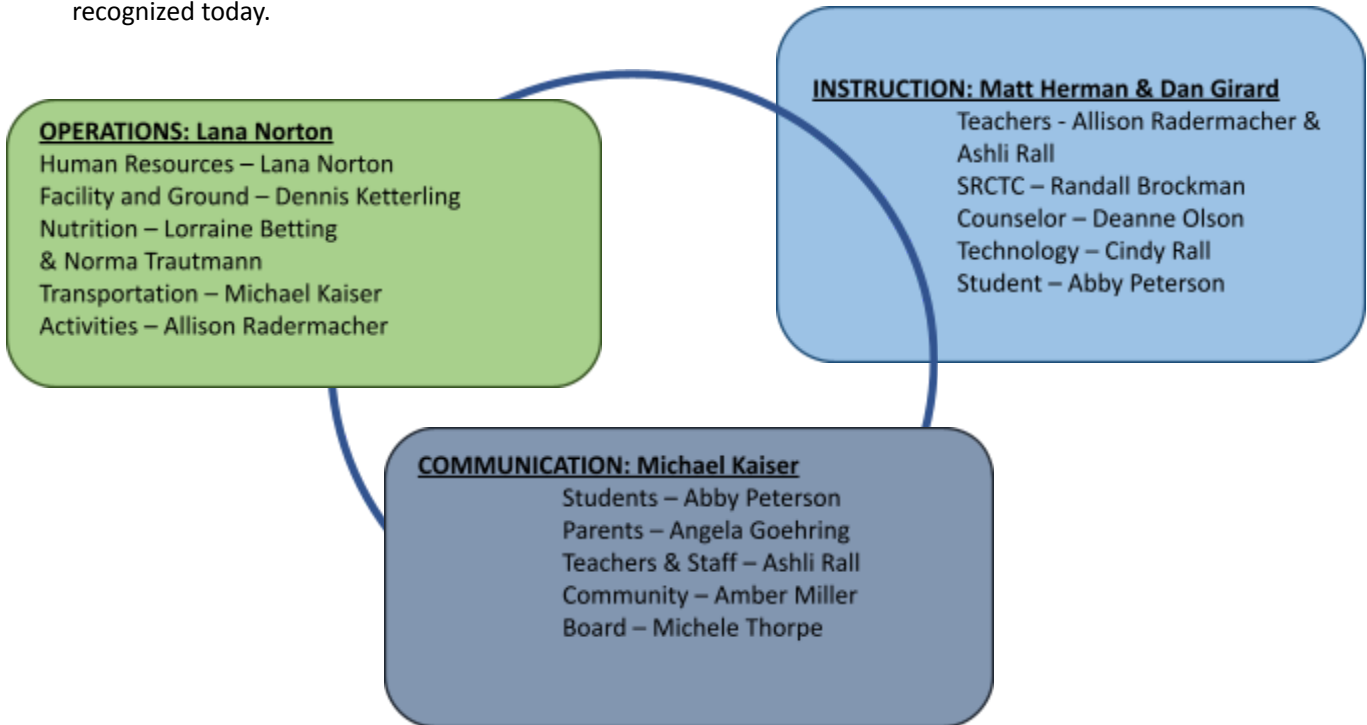
In consultation with the Dickey County Health District, the Ellendale Public School Board initially approved this plan on August 10, 2020.

Plan Evaluation

Please note that this plan is subject to change due to a variety of factors. The Ellendale Public School District COVID-19 Coordinator and Response Team will evaluate the content of this plan and make updates and changes to reflect current guidelines from the North Dakota Department of Public Instruction and the North Dakota Department of Health. Any changes will be communicated to the Ellendale Public School Board.

COVID-19 Response Team & Coordinators

This organizational structure was crafted to assist in the development and monitoring of the EPS Smart Restart Health and Safety Plan. This structure identifies leaders and guiding team members that will serve as a voice in how the district responds to COVID-19 during the school year. This plan is designed to address the issues of reopening as well as provide a nimble and responsive process to address issues that may not be recognized today.



The three components have been identified as key operational teams that consist of multiple departments. Each operational team will work to implement the EPS Smart Restart Health and Safety Plan and address challenges as they arise.

COVID-19 Building Level Coordinators

The school district and each school building will have an identified COVID-19 Coordinator who will be responsible for the health and safety preparedness and response planning. Coordinators will make themselves available to the North Dakota Department of Health 24 hours a day / 7 days a week to respond to phone calls from public health.



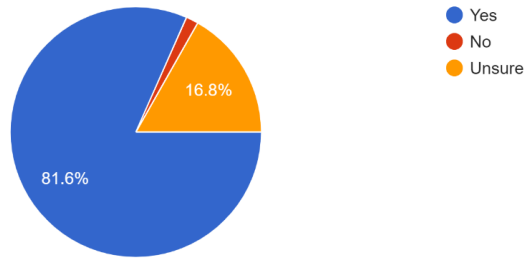
The Superintendent will assume the role of District COVID-19 Coordinator. If the coordinator is unable to be reached, the secondary contact will be the Business Manager. The Elementary Principal will assume the role of Ellendale Elementary and Maple River Colony COVID-19 coordinator. The High School Principal will assume the role of Ellendale High School COVID-19 coordinator.

Return to In-Person Learning Survey Data

PARENT SURVEY – July, 2020 (Results based off of 125 responses)

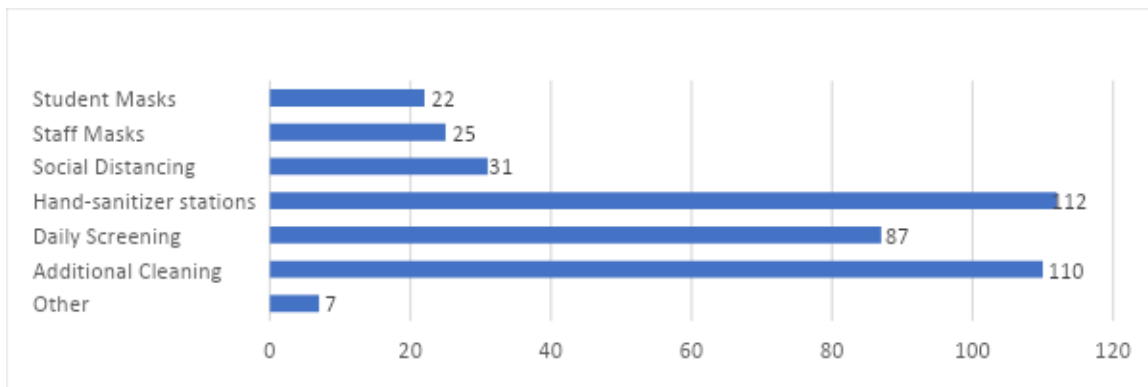
With safety precautions in place, would you feel comfortable sending your child(ren) back to school in the fall meeting face-to-face?

125 responses



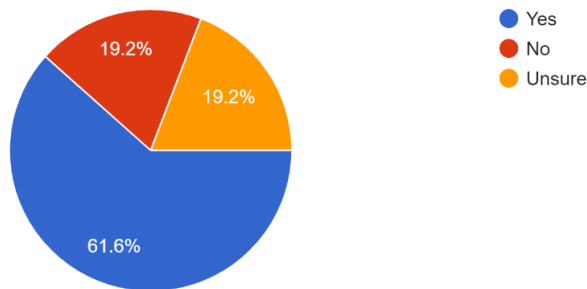
What safety precautions are you expecting the school to have in place? (Check all boxes that apply)

122 responses



Are you in favor of reducing student instructional days to allow staff COVID-19 training in preparation for the re-opening of school?

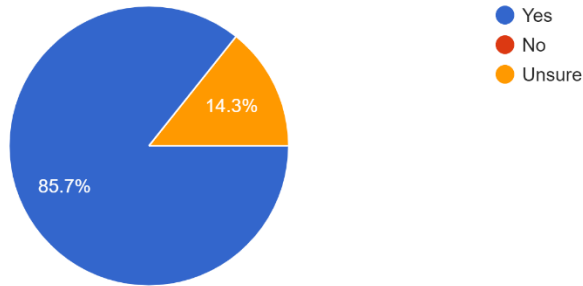
125 responses



STAFF SURVEY – July, 2020 (Results based off of 35 responses)

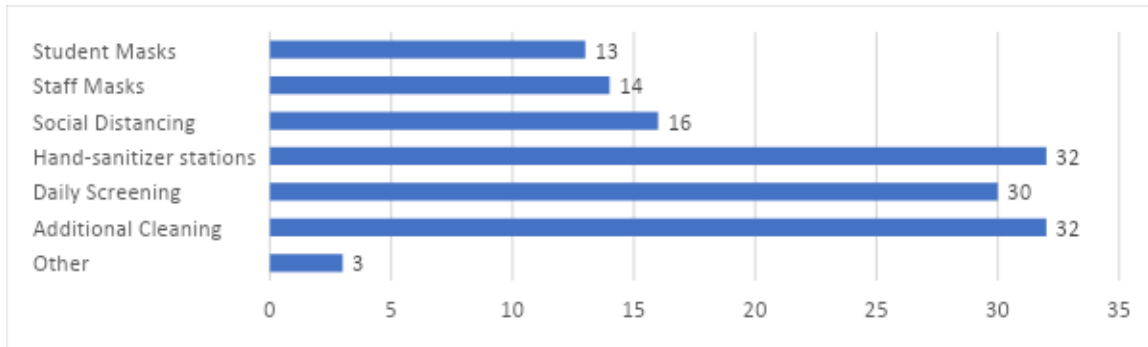
With safety precautions in place, would you feel comfortable returning back to school in the fall meeting face-to-face?

35 responses



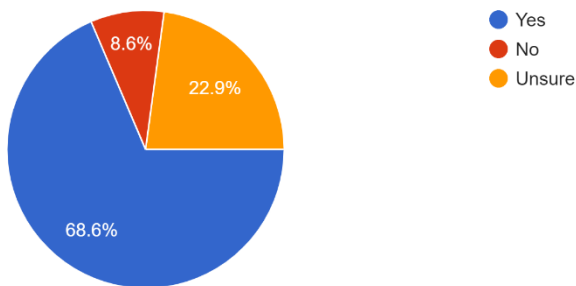
What safety precautions are you expecting the school to have in place? (Check all boxes that apply)

35 responses



Are you open to the consideration of reducing student instructional days and adding Professional Development to prepare for the re-opening of school?

35 responses



Academic Instruction

Instructional Models

Ellendale Public School is planning for in-person instruction as it's primary mode of instruction. Students may experience temporary movement to and from the following modes of instruction based on specific COVID-19 situations in classrooms, buildings, and the district.

In-Person (Traditional Learning)

All instruction is delivered in-person. Teachers and students maintain a normal daily schedule. Safety precautions are implemented to enhance staff and student safety.

Modified On-Campus (Hybrid Learning)

Due to the environment, modified on-campus instruction may be any combination of the following forms:

- Shortened day, in-person with enhanced precautions. The daily schedule may be reduced by 1 to 2 hours to allow for additional cleaning and reduce contact.
- Hybrid Instruction may be as follows:
 - Class sizes may be reduced by splitting the student body into the following two sections:
 - Group A - Students with last names A-L
 - Group B - Students with last names M-Z
 - The following plan for delivery of instruction may be in effect:
 - Monday / Tuesday – Group A in-person; Group B distance
 - Wednesday – Group A and Group B distance
 - Thursday / Friday – Group B in-person; Group A distance
 - Ellendale Public School Teachers will provide instruction for all students, whether at school or at a distance.
 - Delivery of instruction may vary depending on the child's grade level. The primary mode of delivery will take place via Schoology or SeeSaw.
 - All students are required to complete their assignments and participate in instruction through means determined by each class.
 - Class split by last name can change when looking at class splits and number of students allowed in the building
 - Families residing in the same household will be in the same group.

Distance (Schoology and SeeSaw)

In the event of a school closure, all instruction will be delivered through distance learning by Ellendale Public School Staff. Some students might be allowed on campus on a case-by-case basis.

Instructional Model Evaluation

A team consisting of school and local health officials will meet on an as needed basis to assess the current instructional plan (In-Person, Modified-On Campus, or Distance). Any change to the instructional plan will be communicated to stakeholders so that staff and families can transition to the new instructional plan.

Special Education

Special Education personnel will ensure that each student on an IEP will receive the services and accommodations they require and as outlined in the IEP.

Social, Emotional, and Mental Health

Ellendale Public School will continue to provide school counseling services. Counseling services will be made available through individual appointments, which will include virtual opportunities. The school counselor will have scheduled office hours and individual sessions to meet with students needing support. The school counselor will adhere to the ASCA guidelines and ethics.

Health and Safety Guidance

The district strives to provide a healthy and safe environment for all who occupy our schools. The following guidelines are intended to provide a framework for the district's response to COVID-19.

Resources

- [ND Department of Public Instruction](#)
- [ND Department of Health](#)
- [Center for Disease Control and Prevention](#)

Best Intentions

Despite taking every reasonable precaution, there is no guarantee that our schools will be without risk as it relates to COVID-19. The virus will be present on our buses, in our classrooms, and at our activities. In certain situations, social distancing is not possible in a school setting. Our actions, as outlined in this plan, cannot prevent any student or staff member from being in contact with the virus.

Protect Yourself and Others

Wash your hands often



- Wash with soap and water for at least 20 seconds especially after blowing your nose, coughing, or sneezing.
- If soap and water are not available, use hand sanitizer that contains at least 60% alcohol.
- Avoid touching your eyes, nose, and mouth with unwashed hands.
- Students are encouraged to wash their hands often throughout the day.

Avoid close contact



- Practice social distancing. Protect yourself.
- Alternate or modified schedules, adjustments to use of common areas, use of outdoor spaces and other actions that increase physical separation may be considered.
- The sharing of instructional materials should be limited as much as possible.
- Social distancing and/or seating arrangements will be recommended on buses but cannot be guaranteed.
- Upon notification of a positive case, EPS will issue an exposure notice(s).

Cover coughs and sneezes



- Always cover your mouth and nose with a tissue when you cough or sneeze or use the inside of your elbow.
- Throw tissues away and wash hands or use hand sanitizer to prevent spread.

Clean and Disinfect



- School staff should clean and disinfect frequently touched surfaces daily.
- Shared materials should be cleaned (sharing is not recommended).
- Classrooms will be cleaned daily by custodial staff.

Facial Covering



- Masks are optional at the discretion of the individual.
- Specific requirements may be modified based on Superintendent discretion, executive order, and/ or health officer order.

Monitor your health daily



- Be alert for symptoms.
- Parents should screen their children each day before sending them to school.
- Staff and students who are sick should stay home.
- Temperatures of symptomatic students or staff may be taken at the school.
 - Symptomatic students will be isolated, and their guardians contacted. Students should be picked up from school as soon as possible.
 - Please update emergency contact information as they will be called if guardians fail to arrive in a timely fashion or cannot be reached.
- Staff and students may schedule diagnostic or screening tests at Dickey County Health District or their medical provider.

Vaccinations



- Dickey County Health District is the appointed immunization authority for Ellendale Public School.
- If they choose, eligible staff and students may receive COVID-19 vaccinations from Dickey County Health District or their medical provider.
- The Dickey County Health District may use the school to host voluntary vaccination clinics for staff and students.

Health & Safety Protocols

Monitoring the health of students and staff will be an important component of a safe environment.

Identifying Individuals at Higher Risk

- Parents should notify the school if their child is at-risk, based on a health professionals' diagnosis.
- Staff may be provided accommodations, based on a health professionals' recommendations.
- When the NDDoH or Dickey County Health District informs the district of a student or staff member that is COVID-19 positive that information will be passed on to COVID-19 Coordinator as allowable within district policy and law.

COVID-19 School Attendance Guidance

- Parents / caregivers should monitor their children for signs of infectious illness every day.
- Do not send your child to school if **ANY** of the following symptoms are present:
 - Fever of 100.4 F or higher/feeling feverish, sore throat, new/worsening uncontrolled cough, difficulty breathing, vomiting, diarrhea, abdominal pain, loss of taste/or smell **OR**
 - Two or more of the following symptoms with new or worsening onset: fatigue, severe headache, muscle/body aches, chills, congestion/runny nose.
 - People who are ill should contact their health care provider for additional guidance.
 - [Child Care and School Infection Disease Exclusion Guidance](#).

If a student or staff members becomes sick at school (or school event)

- Student
 - Direct / escort the child to the designated area.
 - The child shall be offered a facial covering and isolated in the building's sick room.
 - Parents / guardians will be contacted to pick up their child.
- Staff
 - Inform your supervisor immediately.
 - Leave the school building/grounds and consult with a healthcare professional.

Food Service

The ability of the Ellendale Public School District to provide high-quality and nutritious meals is a crucial component of the educational environment. Meals will be available to all students. Menus will continue to be modified based on staffing and food availability.

Transportation

Ellendale Public School District remains committed to providing a safe and reliable transportation for our students and their families. Families must be aware that the school district is unable to ensure social distancing is adhered to on all buses and at all times.

Ellendale Public School District will enhance procedures to support safe and healthy practices on district transportation to the best of our ability.

The transportation system is dependent upon drivers. COVID-19 may affect the total number of drivers available to the district. This will necessitate changes or reductions to district routes. These changes could happen on short notice. If that becomes necessary, the district will prioritize routes as follows.

1. Rural Routes
2. City Routes
3. SE CTE Route

Bus Stops

- Students should maintain social distancing from other riders, particularly if not from the same family group.

On the Bus

- Facial coverings are optional.
- Hand sanitizer will be available on the bus.
- Keep bus windows partially open when possible.
- Students may be assigned seats.
- Students will be asked to share seats with members of the same household.
- When possible, buses will be loaded back to front and unloaded front to back.